



Acreage On Masonic Ave. Sparta, IL

MLS: 2715632

Listing Price \$245,000

Approximately 4.5 Acres Randolph County

Frontage: 154'

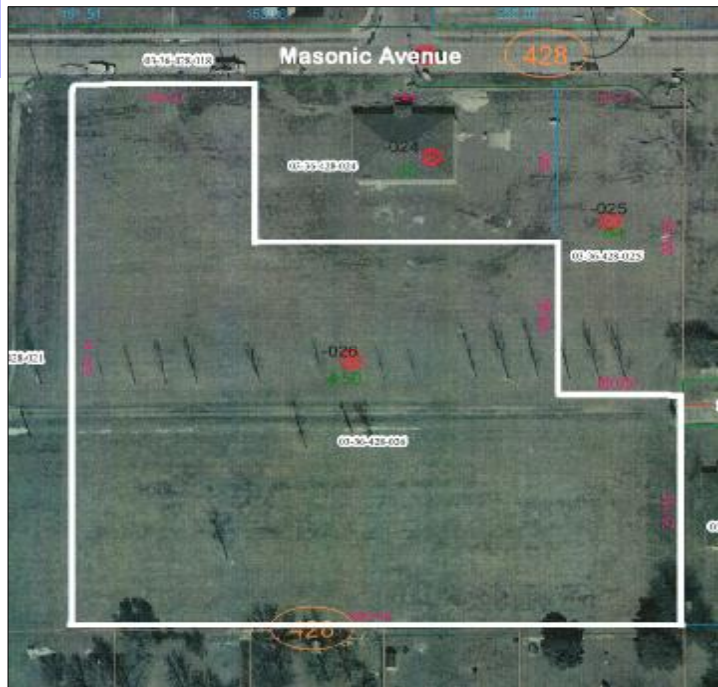
Lot Size: 154x150x248x141x95x232x500x521

Taxes: \$6297.00

Tax Year: 2006

Parcel ID #: 19-149-016-50 Zoned: Commercial

Access to transportation: Airport Nearby, City Maintained Rd., US Highway Rt. 4.



NOTES

Fantastic commercial acreage ready to build on. Just 400 feet off of Route 4 at a major light intersection in Sparta. 4.5 acres, all flat, with utilities.

DIRECTIONS

*IL Route 4 to traffic light at Masonic Ave.
West 400 ft, property on left.*

Karen Schwoebel ~ Broker / Owner
Karen@adamsproperties.com
Office Phone / Fax: (618) 234-9034 ~ Cell: (618) 973-7725